

Pearson Edexcel Level 1/Level 2 GCSE (9–1)

Geography A

Paper 1: The Physical Environment

Tuesday 22 May 2018 – Afternoon

Resource Booklet

Paper Reference

1GA0/01

Do not return this Resource Booklet with the question paper.

Turn over ►

P52364A

©2018 Pearson Education Ltd.

1/1/1/1/1/1/1/1




Pearson

SECTION A



Figure 2a
Ordnance Survey map of coastline near St Agnes, Cornwall, England

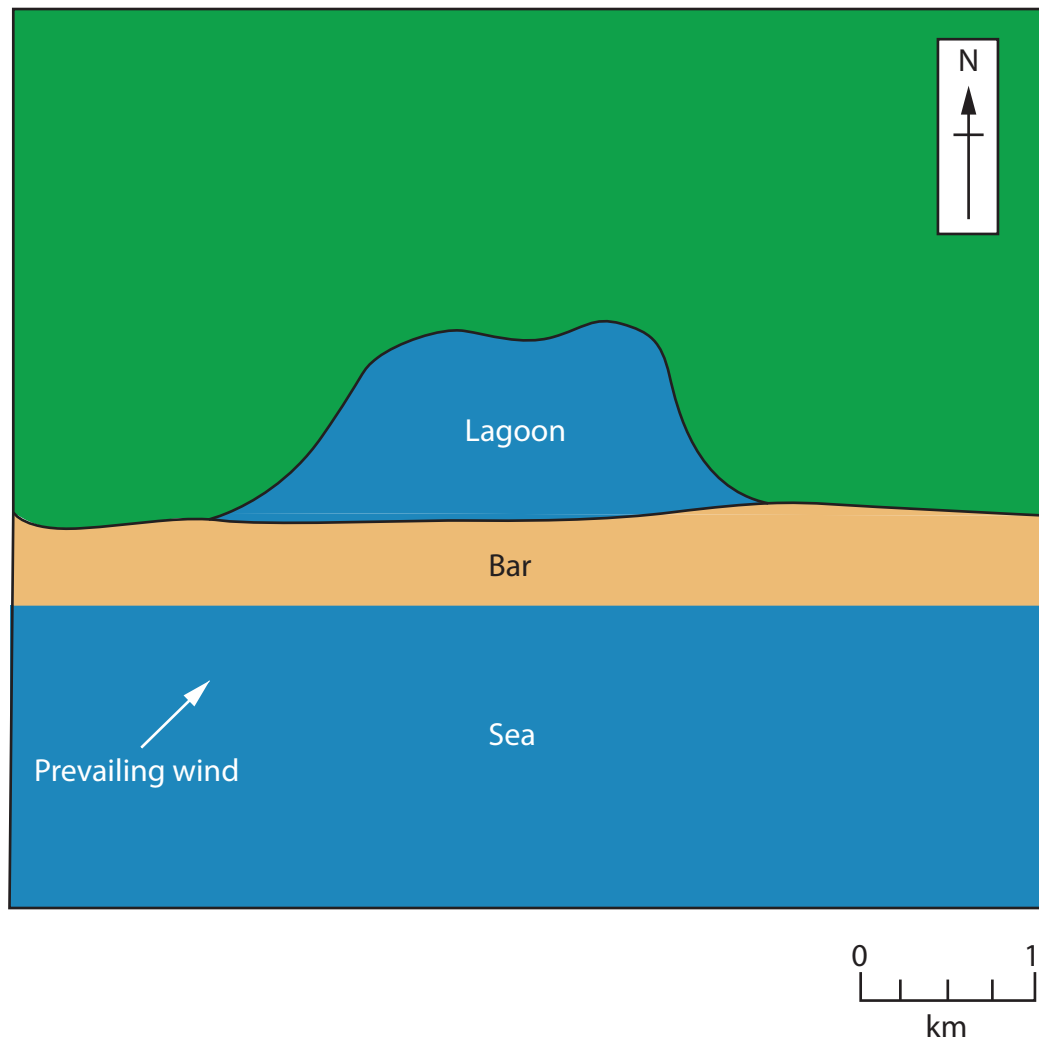


Figure 2b
A diagram showing a bar

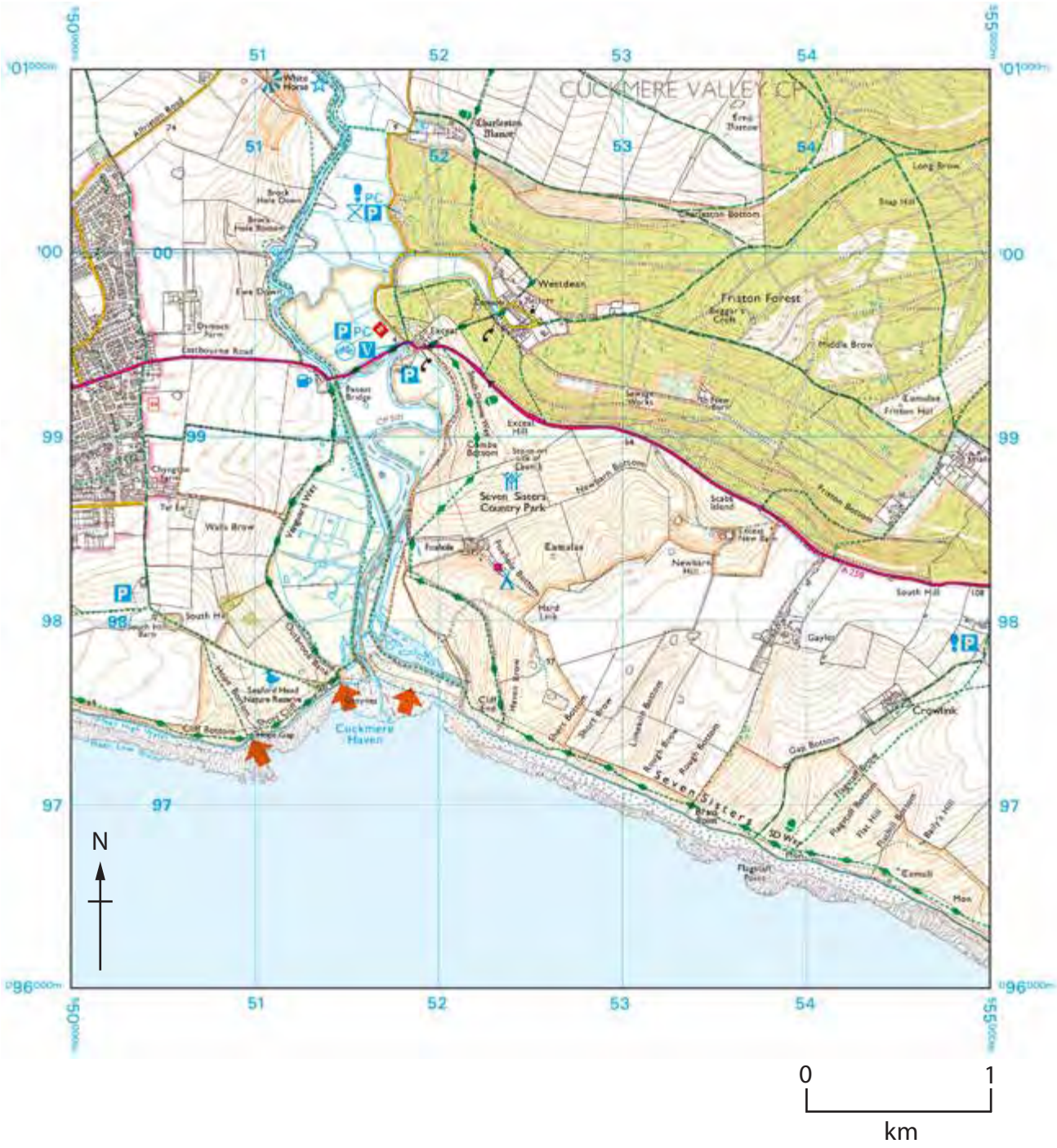


Figure 3a
Ordnance Survey map of Birling Gap, Sussex, England

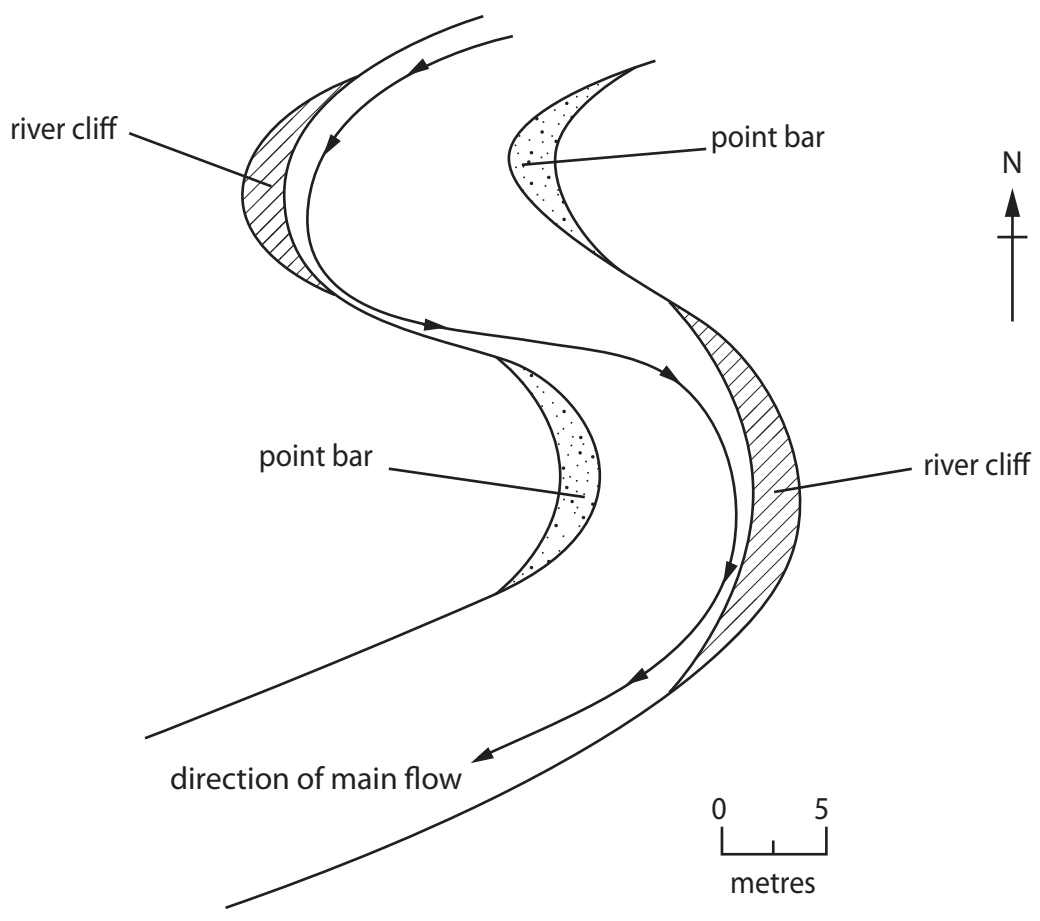


Figure 3b
A diagram showing a meander

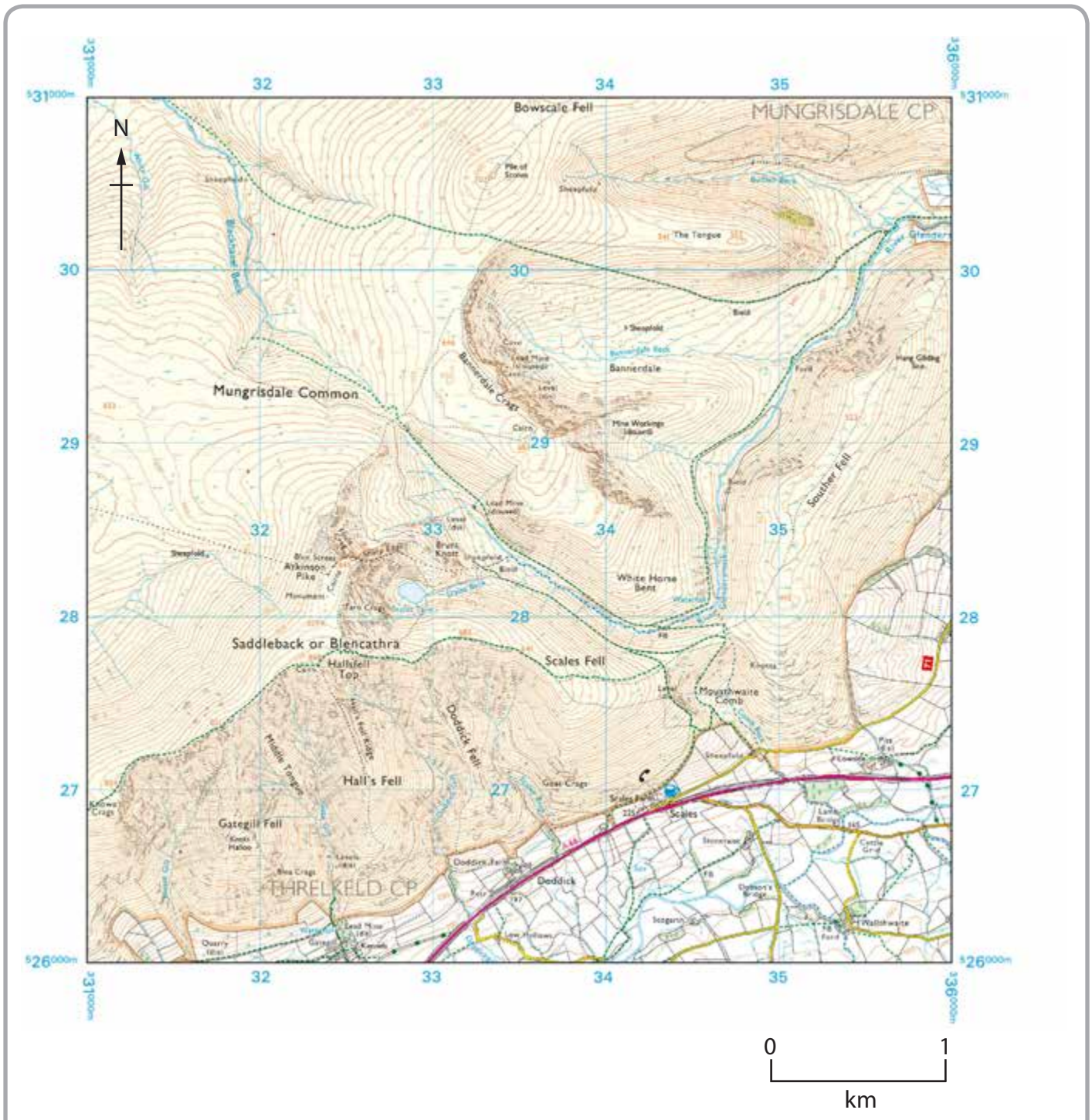


Figure 4a
Ordnance Survey map of Blencathra, Cumbria, England

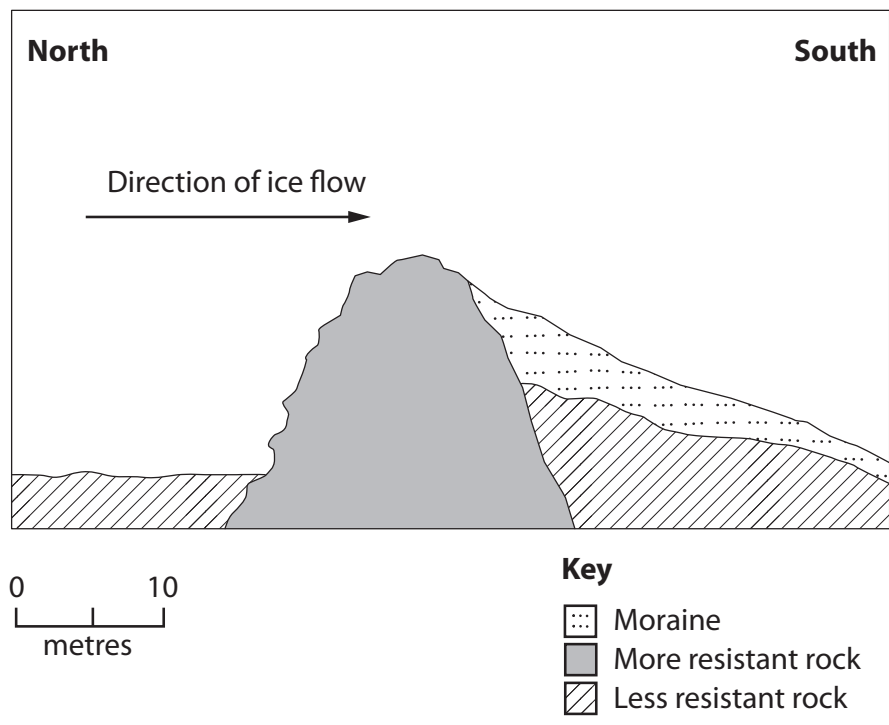


Figure 4b
A diagram showing a crag and tail

SECTION B

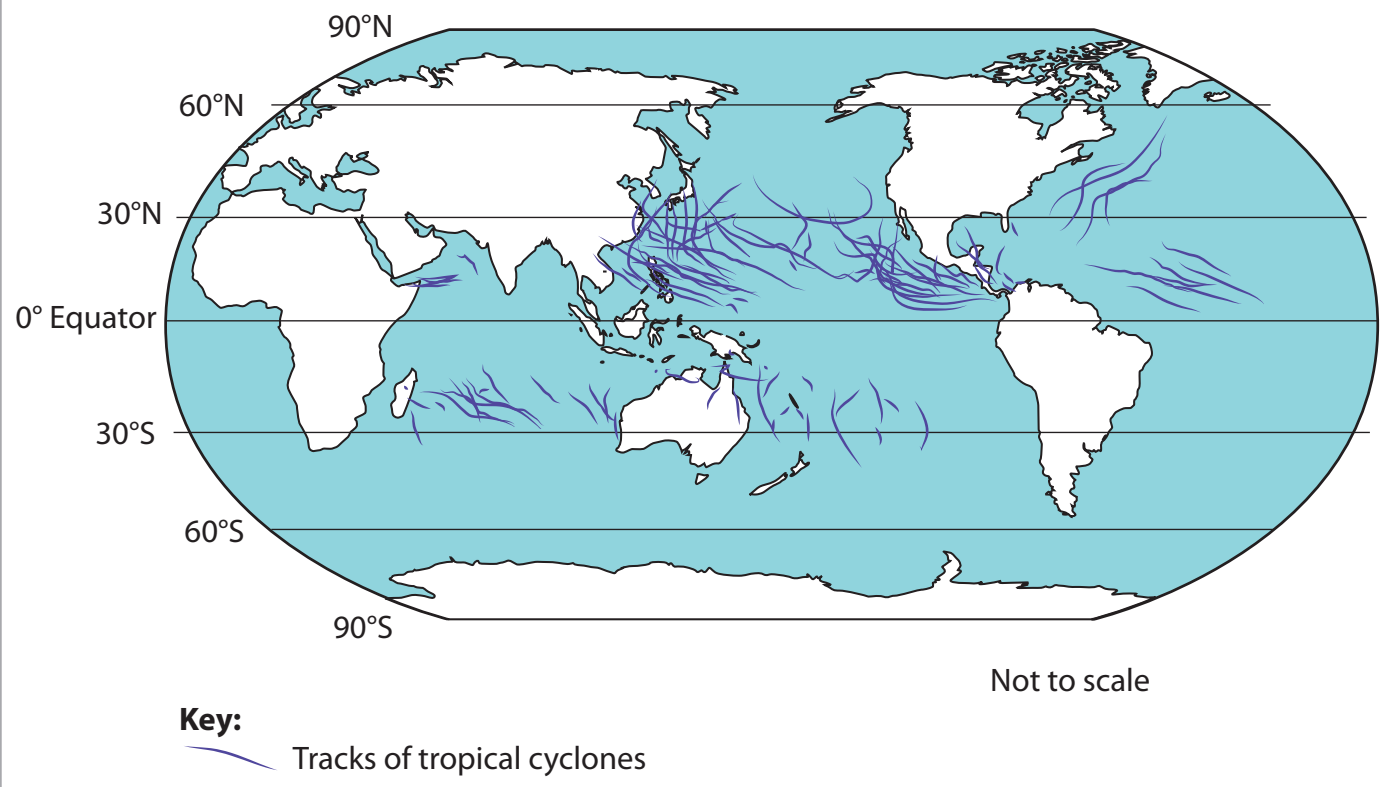


Figure 6a
Map showing the tracks of tropical cyclones in 2015

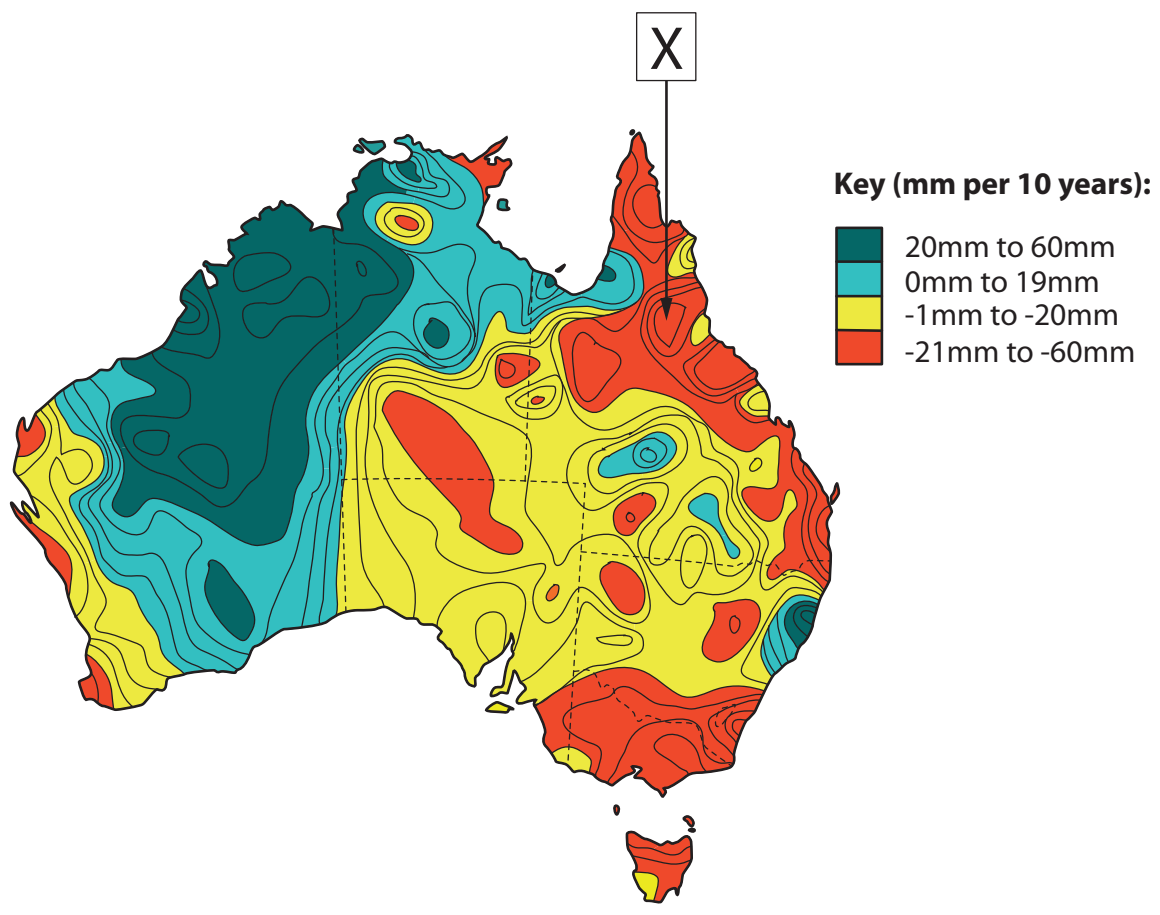


Figure 6c

Map showing the change in total rainfall in Australia per 10 years, 1970-2010

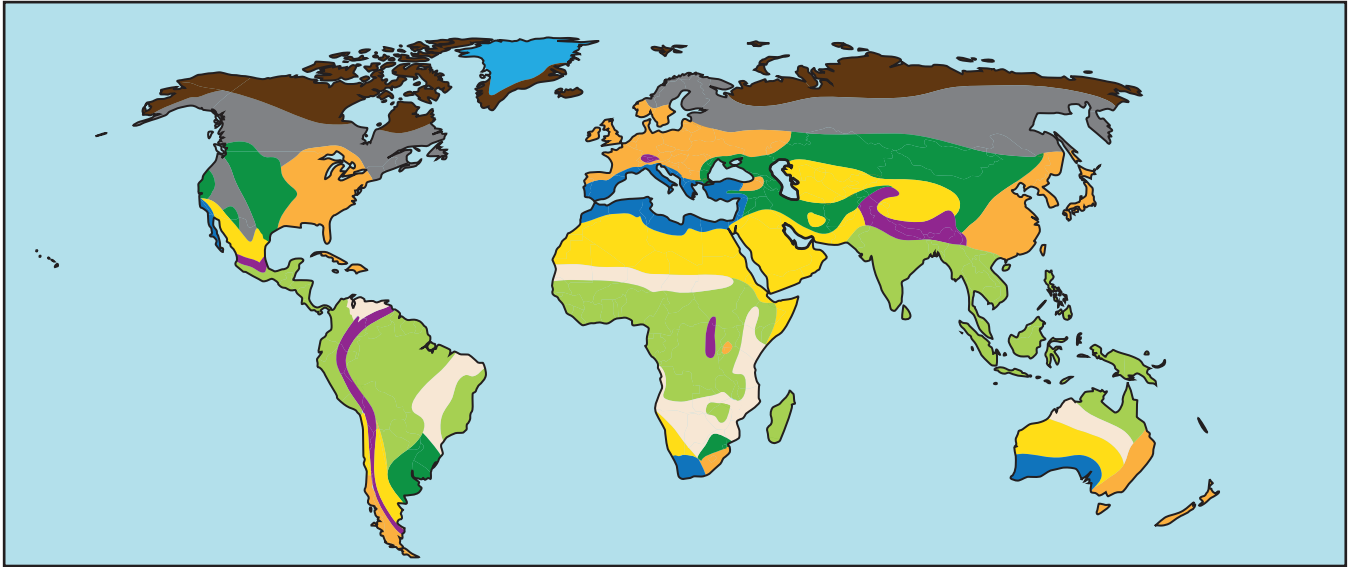


1. The rate of deforestation tripled between 2008/9 and 2013/14.
2. Deforestation in Queensland is contributing to nearly a third of Australia's rising CO₂ emissions.

Figure 6d

An aerial photograph showing an area of forest clearance in Queensland, Australia

SECTION C



- | | | | | |
|-----------------|---------|-----------|-----------|---------------------|
| Tropical forest | Savanna | Desert | Chaparral | Temperate forest |
| Boreal forest | Tundra | Mountains | Polar ice | Temperate grassland |

Figure 7b

Map showing the global biomes

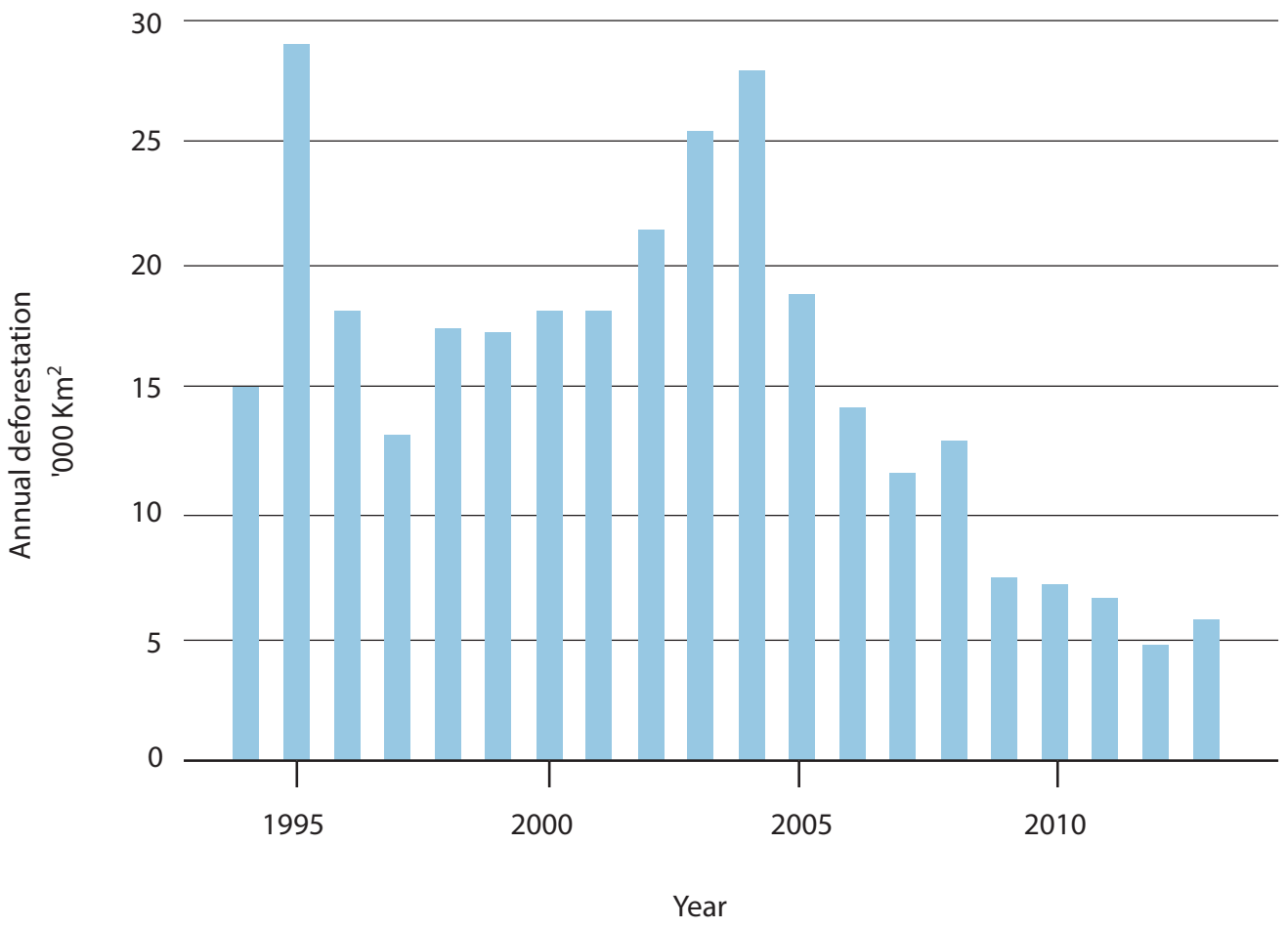


Figure 7e
Annual rate of deforestation in Brazil, 1994–2013

BLANK PAGE

BLANK PAGE

BLANK PAGE

BLANK PAGE

Pearson Education Ltd. gratefully acknowledges all following sources used in the preparation of this paper:

Figure 2a © Crown copyright 2015

Figure 3a © Crown copyright 2015

Figure 4a © Crown copyright 2015

Figure 6a By Permission NASA's Earth Observatory

Figure 6b 2017 Guardian News and Media Limited

Figure 6c <http://www.bom.gov.au/climate/change/index.shtml#tabs=Tracker&tracker=trend-maps>

Figure 6d <https://www.theguardian.com/environment/2015/sep/17/deforestation-surges-in-queensland-ahead-of-crackdown-on-land-clearing#img-2>

Figure 7b https://www.nrcs.usda.gov/wps/portal/nrcs/detail/soils/use/?cid=nrcs142p2_054002

Figure 7e <http://www.economist.com/news/science-and-technology/21603409-how-brazil-became-world-leader-reducing-environmental-degradation-cutting?zid=313&ah=fe2aac0b11adef572d67aed9273b6e55>

Every effort has been made to contact copyright holders to obtain their permission for the use of copyright material. Pearson Education Ltd. will, if notified, be happy to rectify any errors or omissions and include any such rectifications in future editions.